

Location: 1100A

This instruction covers the setup and use of the bench top inkjet printer for printing various inks on solid and flexible substrates.

## 1. SAFETY REQUIREMENTS

- 1.1. Safety glasses must be worn whenever in the cleanroom, except when using a microscope or when wearing protective goggles.
- 1.2. Information regarding the hazardous materials used in this lab can be found through MSDS documentation located in the galley.
- 1.3. When handling hazardous liquids and chemicals, Personal Protective Equipment must be worn.

## 2. Equipment

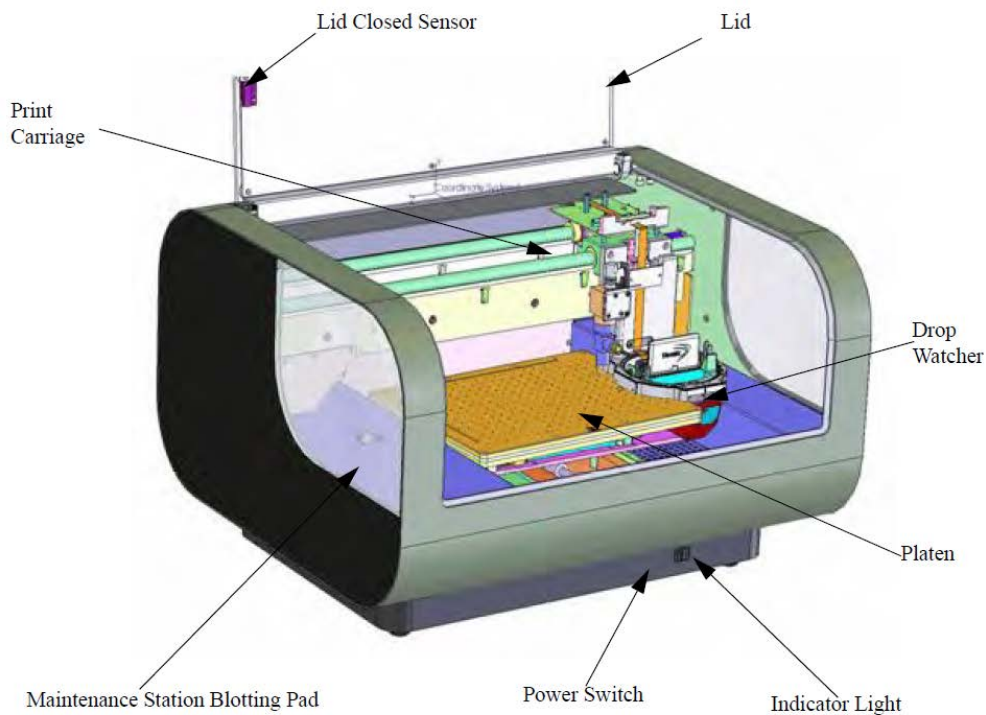


Figure 1 - 1 DMP 2800

## Print Carriage

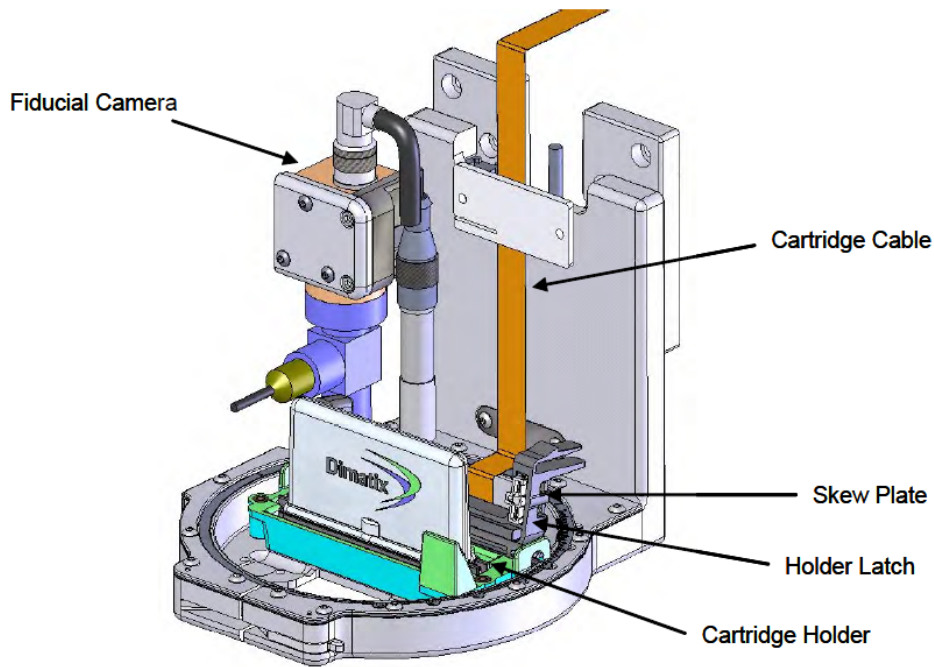


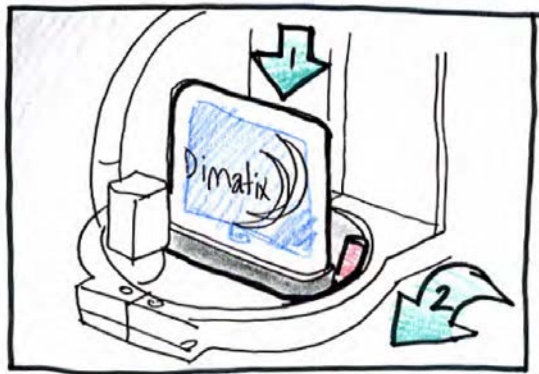
Figure 1 - 2 Print Carriage

### 3. Materials

- 3.1. Ink – user supplied see xxxxxx
- 3.2. Cartridge - available through stockroom in either 1 or 10 pL drop size

### 4. Cycle of Operation

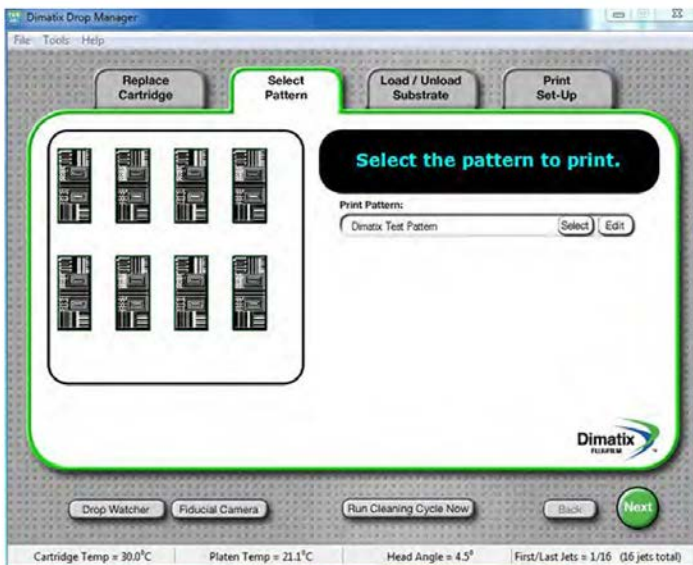
- 4.1. Prepare the Dimatix Model Fluid **Cartridge** from the Starter Kit. See Cartridge Filling instructions in Chapter 10 of user manual.
- 4.2. Insert the cartridge into the cartridge holder on the carriage with the electrical connection pads towards the back of the machine matching the connector of the holder. There is only one way for it to fit. Push it down firmly so that it “clicks” into place.
- 4.3. Pull the cartridge holder latch forward and down until you hear it click and locks into place. Check to see that the cartridge is sitting flat in the holder.



#### 4.4. Confirm load cartridge settings window



#### 4.5. Select Pattern



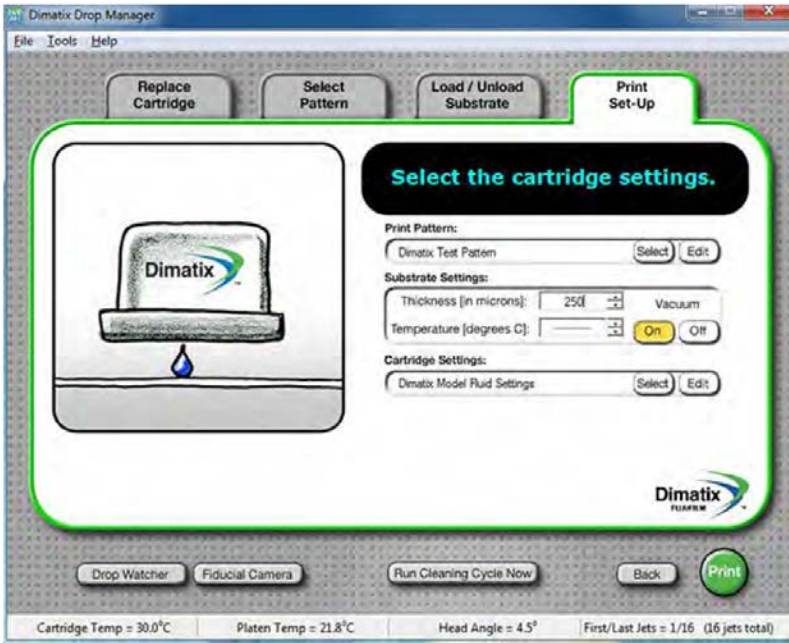
#### 4.6. Load Substrate

##### **WARNING**



Make sure that you always enter the correct thickness. Entering a number that is smaller than the actual thickness can make the carriage crash into or drag across the substrate causing damage to the substrate and/or the machine.

#### 4.7. Print Set-Up



#### 4.8. Print

